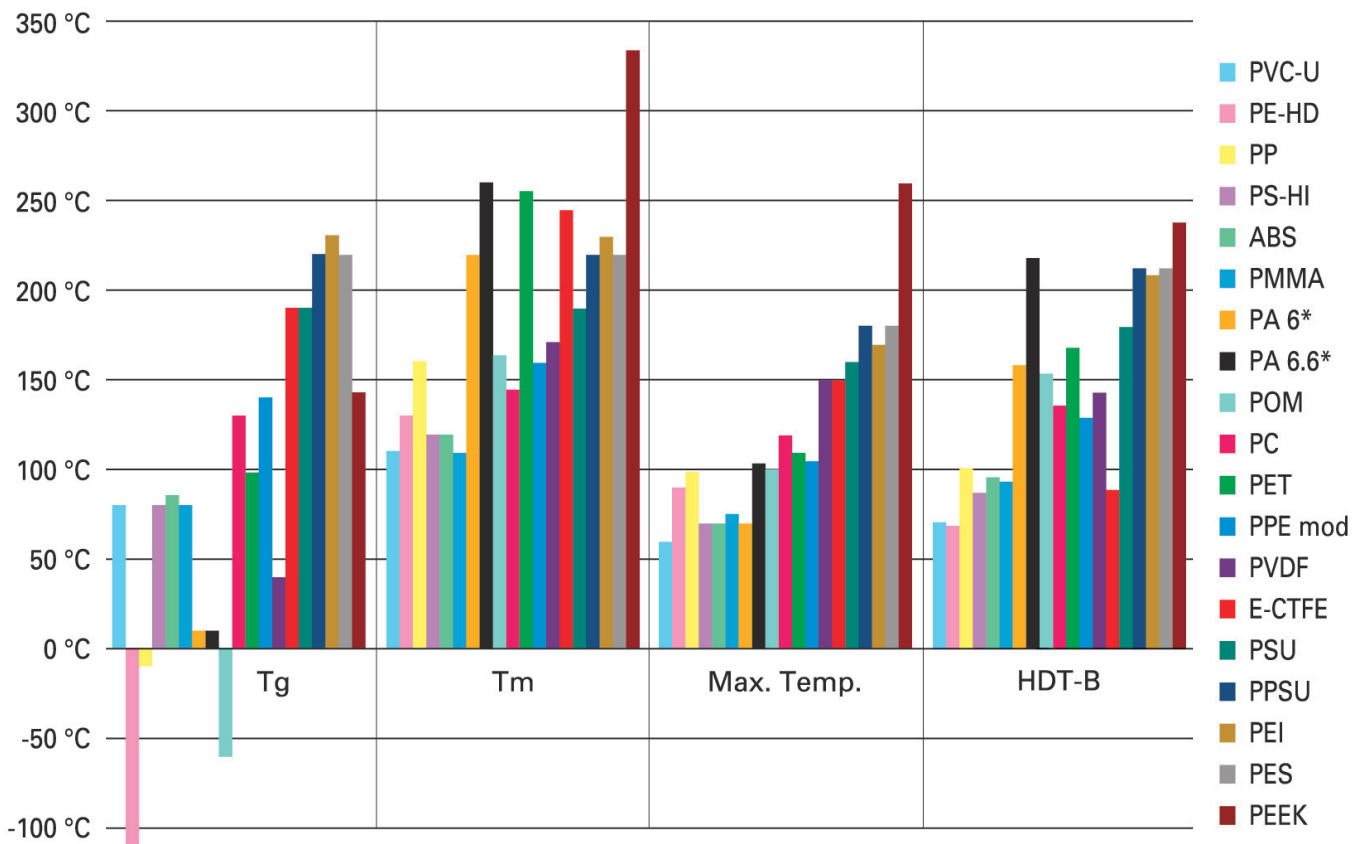


# Thermal guidelines

Technical information | [www.oadbyplastics.co.uk](http://www.oadbyplastics.co.uk)



Tg = Glass Transition Temperature      Max. Temp. = Maximum Service Temperature (UL 746B)  
 Tm = Melting Temperature      HDT-B = Heat Distortion Temperature (B = Specific Measurements)  
 \*Conditioned (in water)